



hunterstoves
GROUP

Di Lusso

INSTALLATION INSTRUCTIONS
DIRECT AIR KIT
DI LUSO EURO STOVES
JINDLUDEAK REV B 30/05/19

HUNTERSTOVES.CO.UK

GENERAL GUIDANCE

These instructions must be read in conjunction with the Installation and Operating instructions supplied with the stove. This kit must be fitted during installation of the stove. Retro-fitting of this kit is not possible without first removing the stove from its recess or enclosure. **Di Lusso recommend that the fitting of this kit and the installation of the stove is carried out by a member of a competent persons scheme e.g. Hetas.** Please leave these instructions with the stove user once the installation is complete.

These instructions cover the installation of the Direct Air Adaptor Kit to Di Lusso Euro stoves.

This Direct Air Adaptor Kit allows the combustion air for the stove to be ducted directly from outside. This will allow a room sealed installation.

It is important that your stove is correctly installed as Di Lusso cannot accept responsibility for any fault arising from incorrect use or installation.

The installation must comply with current Building Regulations, national and European standards, Local Authority Byelaws and other specifications or regulations as they affect the installation of the stove.

The Building Regulations requirements may also be met by adopting the relevant recommendations in the current issues of British Standards BS 8303 and BS EN 15287-1.

Di Lusso recommend that this kit is installed by a member of an accredited competent persons scheme e.g. Hetas.

Contents Of Kit

Description	Quantity
Direct Air Adaptor	1
Inlet Vent - Buff	1
Hose Clips	2
Flexi Ducting	1

INSTALLATION

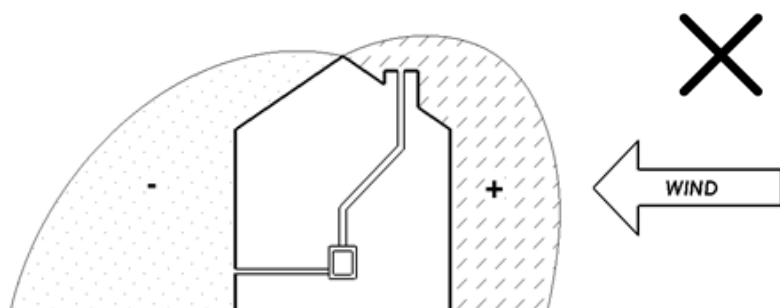
Siting Of The Inlet Grille

Due consideration should be given to the siting of the inlet grille to ensure that strong winds on either the flue terminal, inlet grille or the building itself will not cause the flow of flue gases or combustion air to be stalled or reversed.

If in doubt the inlet duct should be divided by a tee piece and two inlet grilles fitted on opposite sides of the building. Alternatively the duct may be connected to a space or chamber under the floor on which the stove is installed which is ventilated from all sides of the building.

Take note of prevailing winds in the area as well as any tall buildings or trees that may be present and could potentially create pressure zones around the flue terminal.

Do not fit the inlet vent on the downwind side of the building unless the flue terminal is also on the same side. Otherwise downdraft and flue reversal may occur in windy conditions.



Care must also be taken when siting the inlet grille to ensure that it will not become susceptible to blockage or obstruction.

Clearances To Combustible Materials

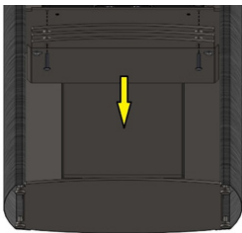
In extreme circumstances it may be possible for the flow of flue gases in the stove to become reversed. In this condition the duct will become heated by the hot flue gas and consideration must therefore be given to preventing the risk of fire.

The duct must be insulated wherever there is any combustible material within a distance of 300mm from the surface of the duct. It is also advisable to insulate the duct wherever possible to reduce the risk of condensation.

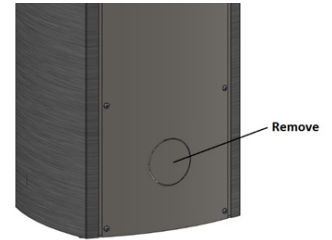
Where necessary the duct should be insulated with 30mm thick Rockwool Rocklap H&V Pipe Sections, having a nominal density not less than 120kg/m³, with a factory applied facing of reinforced aluminium foil incorporating integral lap for fixing. Fixing to be in accordance with manufacturer's instructions.

CONNECTION TO THE STOVE

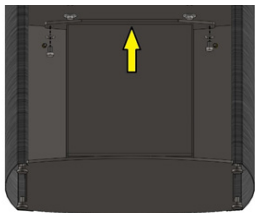
N.B. This kit must be connected to the stove before installation is carried out. Remove the knock-out hole from the back panel as shown.



Undo the screws and remove the lower slats and heat shield from underneath the stove.



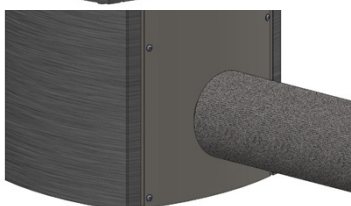
Offer the direct air adaptor into position, making sure that the pipe protrudes through the hole in the back panel as shown. Fix in place with the supplied washers and screws.



Re-fit the lower slats and heat shield. Measure the fireplace opening and check that there is sufficient room for the Direct Air Adaptor and that the position of any hole for the flexible ducting and any insulation is suitably sized and positioned. Carry out any necessary remedial work.



Measure and cut the duct as necessary, allowing an extra 50mm to make the connection to the inlet grille. Connect the duct to the adaptor using the hose clamp provided. Where necessary fit the insulation to the duct, sealing all joints with foil tape.



Pass the duct through the prepared hole and manoeuvre the stove into position.

Connection to the Inlet Grille

Offer the Inlet grille into position on the outside wall and where necessary mark and drill the fixing holes.

Connect the Inlet grille to the duct using the clamp provided. Apply a bead of sealant to the back face of the inlet grille and fix the grille to the wall.

Commissioning

Carry out the commissioning procedure as described in the instructions supplied with the stove.



hunterstoves
GROUP

8 EMPEROR WAY EXETER DEVON EX1 3QS
INFO@HUNTERSTOVES.CO.UK WWW.HUNTERSTOVES.CO.UK

Hunter Stoves reserve the right to change dimensions and procedures described in these instructions
at anytime without special notice.